

Ignited Minds
Society

Ignited Minds Society's

MIBM

Mulshi Institute of Business Management
Promoted and Managed by ISB&M, Nande - Pune



**Best Preferred
B-School
in
Pune**



AICTE Approved PGDM

11 YEARS LEGACY OF PLACEMENT CONTINUES.....

PROSPECTUS 2022

Opportunities

Deloitte.

Sidhant Awale

Sonika Kumari

Divyanshi Rejwani

Priyanshi Awasthi

Campus Placement

Batch: 2022

7.6 Lacs CTC

and Placements



Satkireet Singh
Garima Singh

Campus Placement

Batch: 2022
6.5 Lacs CTC

Highlights

One Flagship PGDM Programme (AICTE Approved)



500+

Alumni Across
the Globe



High Profile

Management
Campus
Pune Mulshi



6 Specialization

Marketing | Finance | HR | SCOM | Media | Business Analytics



200+ Corporate Leaders
Trained
& Executives

from both Public and
Private Sector Undertaking



100%

Placements
(Summer and Final)
since inception



1:10

Faculty :
Student
Ratio

Kumari Tanu
Batch: 2020-22
Ergode

CTC 14 Lacs

Home Town : Patana, Bihar



Strong Industry Connect

Work Integrated Learning Programme with Leading Organisations



National
Conferences
every year



FDP

Faculty Development
Programmes

organized every year for Faculty Members
and Ph.D. Scholars Pan-India

MIBM Recognition 2021



AICTE Approved
Best B-School in Pune

Associate with



Confederation of
Indian Industry

Internationally Recognized by
USBES



Mrugank Updhyay
Purnartha Investment

Package: 7.15 lac

Management Trainee - Asst. Manager



MGI changed my thought process, my existence was new and out of the box. I was more decisive and accurate of my decisions. I am totally different person today, If I compare myself to what I was before entering the gate of MGI. I will be forever thankful to MGI for creating the new ME.



LEARNING

Add
MIBM
to your
resumé!



Core Programme PGDM

MIBM Academic learning programme is intellectually stimulating –driven by highly qualified faculty. Our PGDM programme is driven by following objectives :

- Develop Knowledge, learn business analysis skills & tools.
- Intellectual development aimed at thinking, problem solving & decision making skill learning.
- Develop leadership talent and seek complete value system & attitude transformation.
- Be able to succeed in professional life & career in India and abroad.

MIBM Offers

Post Graduate Diploma in Management (PGDM) Programme

2 Year Dual Specialization Programme is approved by

All India Council for Technical Education (AICTE), New Delhi



Marketing

Finance

Human Resource Management

Supply Chain & Operations Management (Only for Engineers)

Media & Communication

Business Analytics

MIBM Programme is a blend of courses and workshops designed to build their business acumen and competencies.

The programme is designed to maximize a student's learning by dividing the course into two categories :

1. Core Courses

2. Elective Courses

Credits

A student is required to complete 135 credit courses to complete PGDM programme.

The programme comprises of core courses and elective courses with following credit point details:

| Courses | Credit |
|--------------------------------|------------|
| Core Courses | 66 |
| Elective Courses | 60 |
| Summer Internship | 06 |
| Dissertation | 03 |
| Total number of Credits | 135 |



I. Core Courses

1. Marketing Management I
2. Financial Management
3. Human Resource Management
4. Organizational Behaviour
5. Operations Management I
6. Managerial Economics I
7. Quantitative Techniques - I
8. Marketing Management II
9. Management Accounting
10. Operations Management II
11. Managerial Economics II
12. Quantitative Techniques - II
13. Introduction to Data Science & Business Analytics
14. Organizational Structure, Design & Leadership
15. Business Environment
16. Business Research Methodology
17. Introduction to Supply Chain Management
18. Business Policy & Strategy
19. Management Information System
20. Entrepreneurship Development
21. Business Ethics & Corporate Governance
22. Business Laws

II. Foundation Course

- Accountancy for Managers
- Basics of Data & Analytics
- Technical Orientation & IT for Manager

III. Elective Course

For each of the PGDM Programme, a student has to select courses equivalent to 60 credit points in any of the following combination:

- Marketing with Finance / HR / Media / SCOM / Business Analytics
- Finance with Marketing / HR / Media / SCOM / Business Analytics
- HR Management with Marketing / Finance / Media / SCOM / Business Analytics
- Human Resource Management

The Evaluation of a student depends upon these parameters

1. Continuous Evaluation

- Quizzes, Assignments
- Live Projects
- Case Analysis
- Comprehensive Viva
- Mid Term Exam

70%

2. End term Exam

30%

MIBM students need to create the right blend of the core course and elective courses.

Business Analytics

- Introduction to Big Data Analytics
- Optimal Decision Making using Simulation
- Fundamentals of Database Design & Data mining
- Econometrics for Managers
- Business Analytics Technologies
- Intermediate Level Programming & System Architecture Concepts
- Introduction to Python
- Introduction to ML and AI concepts
- Operations & Supply Chain Analytics
- Marketing and Retail Analytics
- Advanced Supply Chain Analytics
- HR Analytics
- Finance & Risk Analytics
- Web and Social Media Analytics
- Health Care Analytics
- Public Policy Analytics

Finance Management

- Corporate Finance
- Financial Statement Analysis
- Finance & Risk Analytics
- Financial Market & Services
- Strategic Perspectives in Banking
- Financial Modelling
- Modern Investment & Portfolio Management
- Wealth Management
- International Finance
- Derivatives, Options and futures
- Investment Banking
- Pricing & Revenue Optimization
- Treasury Management
- Corporate Taxation
- Fixed Income Securities

Marketing Management

- Consumer Behavior
- Sales & Distribution Management
- Digital Marketing
- Product & Brand Management
- Qualitative Marketing Research
- Retail Management
- B-to-B Marketing
- Customer Relationship Management
- Marketing of Financial Services
- Integrated Marketing Communication
- Marketing and Retail analytics
- Rural Marketing
- Services Marketing
- Luxury Marketing
- Responsible & Sustainable Marketing
- Strategic Marketing
- International Marketing

Human Resource and Industrial Relations

- Performance Management System
- Recruitment & Selection
- Talent Management
- Training & Development
- Trade Union and Industrial Relations
- Career Management
- Competency based HRM
- Organizational Change & Development
- HR Analytics
- Labour Laws I
- Negotiation Skills & Collective Bargaining
- Global Human Resource & Diversity Management
- Strategic Compensation Management
- Strategic Human Resource Management
- Grievance Management
- Industrial Discipline
- Labour Laws II
- Executive Search and Consultancy
- HR Issues in Mergers and Acquisition

Supply Chain and Operations Management

- Project Management
- Total Quality Management
- Inventory & Warehouse Management
- Operations & Supply Chain Analytics
- Procurement Management
- Advanced Supply Chain Analytics
- Logistic & Distribution Management
- Services Operations Management
- Supply Chain Finance
- Global Supply Chain Management
- Enterprise Resource Planning
- Managing Operational Improvement

Media & Communication

- Introduction to Contemporary Mass media
- Introduction to Communication Management
- Advanced Digital Media Design
- Script writing for TV and Web
- Advertising and Public Relations
- Media Planning & Sales
- Multi-Media Story Boarding
- Digital Media Campaign Strategies
- Production Design & Film Budgeting
- Client Servicing and Media Management
- Advertising Agency Management
- Film Production and Editing
- Motion Graphics
- Short Format Film Making
- UI Design for Web And App

General Electives

- Behavioural Economics
- Econometrics for Managers
- Development Economics

Core Programme Portfolio

Post Graduate Programme portfolio at MIBM campuses

Every student at MIBM has different needs, different learning styles and different career plans. Programme portfolio offers you an opportunity to structure your career by mixing to create portfolio for your career needs. We choose to blend out of available specialization to create your own unique career.

| Campus | Mulshi |
|---------------------------|--------|
| Marketing | ✓ |
| Finance | ✓ |
| Human Resource | ✓ |
| Supply Chain & Operations | ✓ |
| Media and Communication | ✓ |
| Business Analytics | ✓ |



Prasad Bhandurge
Deloitte



Being a student from Finance, I was taught by the finest, and most reputed faculties. I have benefited from the learning they have imparted to me and would like to thank everyone who has made my stay at MIBM positive and worthwhile. I would also like to thank MIBM for providing me with the right environment to groom myself professionally. I am sure that the learnings I have got here will be applicable throughout my career. Now, being placed at Deloitte Taxation, I am glad to be a part of this institution..



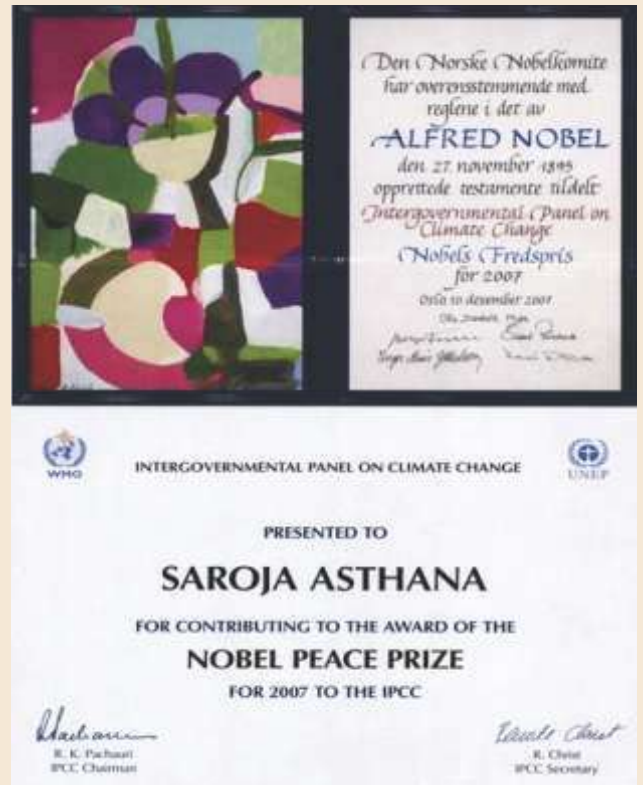


Dr. Saroja Asthana
Founder
MIBM

Recognition & Awards

Consistently ranked among the top business schools, MIBM has grown from strength to strength

CONTRIBUTOR **NOBEL** **PEACE PRIZE 2007** to IPCC and **Prime Minister's Appreciation Award**



Salient Features

MIBM Campus Recruitment

MIBM Campus recruitment is strategically planned with the following objectives :

- ❶ A job for every student who wants a campus placement (some go back to family business)
- ❷ Company Brand & Compensation positioning for high profile career value & economic value.

Our Recruiters include :

- ❸ New Age Recruiters – These include investment, big data, technology, ecommerce & consulting companies, e.g., TreVista, Adecco, Alten, diversified companies, GEP Worldwide, Hotstar.
 - Fast paced career growth with Global posting.
 - High Compensations & economic value, going up to 12 Lacs CTC in India.
- ❹ Core Sector recruiters include- FMCG, Engineering companies, Wipro, Colgate, Asian Paints, IBM, UB Group, Raymond

Supportive Culture in Placement to help you :

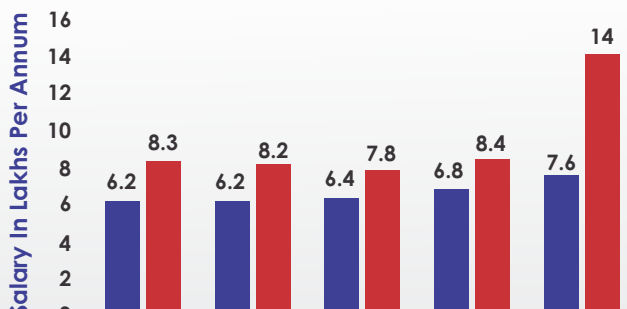
- ❶ Cope with pressure of placements.
- ❷ Prepare you for high profile companies
 - Workshops
 - Coaching & Counselling
 - Communication & body language

Highest :
14 Lacs CTC



Average :
7.8 Lacs CTC

AVERAGE COMPENSATION GROWTH

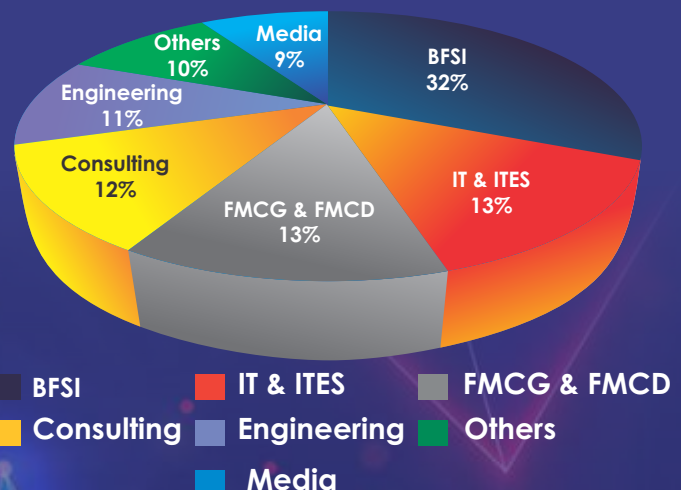


| MIBM Batches Year | Average Salary | Highest Salary |
|-------------------|----------------|----------------|
| 2016-18 | 6.2 | 8.3 |
| 2017-19 | 6.2 | 8.2 |
| 2018-20 | 6.4 | 7.8 |
| 2019-21 | 6.8 | 8.4 |
| 2020-22 | 7.6 | 14 |

MIBM Batches Year

Average Salary █
Highest Salary █

MIBM Sectorwise Recruitment



Recruiters Highlights

| | | | | |
|--|---|---|--|---|
|  |  |  |  |  |
|  |  |  |  |  |
|  |  |  |  |  |
|  |  |  |  |  |
|  |  |  |  |  |
|  |  |  |  |  |

“

MIBM is a place where destiny meets success. It has given me the opportunity to Learn, Grow and Achieve. Under the sheds of well experienced faculties the process of learning was always very delightful for me. The 2 years journey here is unforgettable and became the foundation towards my success path. Starting from an internship in Bajaj Finserv to getting PPO of Bajaj, all of it was just because of the learning and support from the faculties. Thanks to Dr. Pramod Kumar and Dr. Asthana who encourages each & every student to dream big and to work for it. I am overwhelmed to witness this great journey of learning in this exceptional college that enabled me to know my strengths and also gave me opportunity to boost them. Thank you faculties and my peers for having faith in me and empowering me to believe in my decisions

Ankit Jain

 Batch: 2018-20

 Bajaj Finserv



Prominent Recruiters

Final & Summer Internship

FMCG

Agrotech Foods Ltd.
Asian Paints India Ltd.
Berger Paints India Ltd.
Carlsberg
Cargill India Pvt. Ltd.
Colgate Palmolive India Ltd.
Diageo India Pvt. Ltd.
Ferrero Rocher
Gulf Oil
Kansai Nerolac Paints Ltd.
Kellogg
Mondelez India Foods Pvt. Ltd.
Monstano India
Nestle
Parle
Raymond Textile
United Breweries Group
Welspun
Wipro Consumer Care and Lighting
Dukes India
Nivea

CONSUMER DURABLES

Bausch + Lomb
Blue Star Ltd.
Conon India Pvt. Ltd.
FB Industries
Godrej & Boyce Mfg. Co. Ltd.
Hamilton Housewares Pvt. Ltd.
Haier
Harman By Samsung
Havells India
Kohler India
LG Electronics India Pvt. Ltd.
LIXIL
Philips India
Ricoh India
TDK
Titan Company
Videocon DTH Service Center
VIP Industries
Voltas Ltd.
Whirlpool

BANKING FINANCE & INSURANCE

Acuite Ratings & Research
Aditya Birla Capital
ART Housing Finance
Axis Bank
Bajaj Allianz General Insurance
Bajaj Allianz Life Insurance
Bajaj Finserv
Bharti Axa General Insurance
Birla Sunlife Asset Management
BNY Mellon India Pvt. Ltd.
Cholamandalam Investment & Finance
Credit Suisse

BANKING FINANCE & INSURANCE

Deutsche Bank
Edelwiess Capital Ltd.
Futures First
HDFC Standard Life Insurance Co.
Hero Corp Insurance
HFFC
HSBC Bank Ltd.
IDFC First Bank
ICICI Life Insurance
ICICI Prudential AMC
ICICI Securities
IndusInd Bank
Kotak Mahindra Bank
Mahindra & Mahindra Financial Services
Motilal Oswal Financial Services
N.S.E.
Ncdex
Niyo Solutions
Purnartha Investment Advisers Pvt. Ltd.
SBI General Insurance
Standard Chartered Bank India
TATA AIA
TATA Investment Corp.
TresVista
Way2 Wealth Brokers
Yes Bank
AU Small Finance Bank
DCB Bank

MEDIA

9X Media
Aaj Tak
Adfactors PR
Bennett Coleman & Co. Ltd.
Bloomberg
CNBC - TV18
Fork Media
Group M
IBN7
Network 18
Oligvy & Mather
Hotstar
Radio City
Radio Mirchi
Radio One
Reliance Broadcast
Times Television
ZEE Networks

GROUP

Adani Group
DLF Group
Essar Group
Jindal
Manipal Group
Reliance ADA Group
Trident Group

RETAIL

Aditya Birla Retail
BATA India
Callaway Golf
Coffee Day Beverages
FOSSIL
Future Group
Hyper City Retail India Ltd.
ITC Wills Lifestyle
Landmark Group
Lifestyle Store
Madura Garments
Raymond
RPG Retail Spencer
Shoppers Stop
TATA Croma
TATA Starbucks

MANUFACTURING & ENGINEERING

ACC Ltd.
Alliance Tyre Group
Ashok Piramal
Altas Copco India Ltd.
Atul Ltd.
Bluestar Design & Engineering Ltd.
Brislecone
Cummins India Ltd.
Honda Power Ltd.
Honeywell Automation India Ltd.
JK Tyres & Industries Ltd.
JSW Energy Ltd.
Kohler Power
Rockwell Automation
Schneider Electric
Stanley Black & Decker
TATA Chemicals
The Paper Products Ltd.
Varroc Engineering Pvt. Ltd.
Volvo Eicher Commercial Vehicles

AUTOMOBILE

Ashok Leyland
Eicher Motor Ltd.
Fiat India Automobiles Ltd.
Hero Moto Corp
Mahindra & Mahindra Ltd.
Mahindra Two Wheeler
Mercedes - Benz India
Piaggio Vehicles Pvt. Ltd.
Rolls Royce
Royal Enfield
Skoda Auto India Pvt. Ltd.
TATA Motors Ltd.
TVS Motors
Volvo India
CEAT India

Career building is key element of education in MIBM .You learn quality Professionalism attitude and values. You Join MNCs and top Indian Companies during Internship Programme to be able to learn well, Work habit and benchmark competitive Standard.

TELECOM

GIONEE
Reliance Jio
TATA Sky
TATA Teleservices
Vodafone Idea

HOSPITALITY & LIFESTYLE

Hyatt Hotels
M D Healthcare Services
Millipore India Pvt. Ltd.
OYO Rooms
Taj Air Sats
Taj Hotels
The Leela Group
Thomas Cook India

ENERGY

Baker Hughes (a GE Company)
Entercoms India Ltd.
Reliance Energy Ltd.
Suzlon Energy Ltd.
TATA Power
Repos Energy

PHARMA & CHEMICAL

Apollo Health & Lifestyle
AstraZeneca
BASF - The Chemical Company
Becton Dickson India Pvt. Ltd.
Cadila Pharma
Glaxosmithkline Pharmaceuticals
Glenmark Pharma
Himalaya Drug Company
Johnson & Johnson Medical India
Jubilant Life Sciences
Lupin Pharma Ltd.
PI Industries
Sun Pharma
Atul Ltd.

CONSULTANCIES

Dun & Bradstreet
Franchise India
Frost & Sullivan
GALLUP India
IKYA Human Capital Solutions
KANTAR IMRB
Kelly Services
Korn Ferry
KPMG
Michael Page
Options Group
PwC
Nielsen
GEP Worldwide
3SC SOLUTIONS
Boston Analytics
CP Group
Deloitte Taxation
Deloitte Consulting
DHL Supply Chain Solutions

LOGISTICS

Brokeman Logistics
DB Schenker
FedEx
GATI - KWE
JM Baxi Co.
Kuehne + Nagel
M J Logistics Services Ltd.
Maersk Line
NYK Logistics
Panalpina
Reliance Logistics Ltd.
Transystem Logistics International

IT / IES / Tech.

Amdocs
Atos Syntel
ALTEN India
BYJU's
Capgemini
Cognizant Technology Services
e - Clerx Services Ltd.
FourKites
Fujitsu
Genpact
HCL Infosystem Services Ltd.
Honeywell Tech Soln. Lab
HSBC Technology Services Ltd.
INTEL
ITC Infotech
JDA Software
L&T Software
Marvel Technologies
MRCC Solutions
Nuance Transcription Services India
TCS
TRINAMIX
Zoomcar
Nopaperforms
Cleartax India
Phonepe
Lenskart.com
HungerBox
Wipro

REAL ESTATE

Kotle - Patil
Lodha Builders
Panchshil
Prop Tiger
Raheja
Hiranandani
JLL
Godrej Properties

160+
companies visiting
every year



500+
Alumni Network



100%
Placements
(Summer and Final)
since inception

Placement in
National and
International
companies



WHERE DO B- SCHOOLS STUDENTS DREAM TO BE

PwC | DELOITTE | IBM | AMAZON | WIPRO | BT | ITC |
HSBC | MICROSOFT | ACCENTURE | STANDARD CHARTED BANK

You can Find

MIBMites

among them

Rahul Bose
Senior Consultant
PwC
Kolkata
Batch: 2010-12

Prasad Bhandurge
US Tax Consultant-1
Deloitte
Hyderabad
Batch: 2019-20

Khirod Kumar Bishoyi
Advisory Consultant
IBM
Pune
Batch: 2014-16

Sahil Dhawan
Contract Manager
BT
Gurugram
Batch: 2011-13

Utkarsha Mishra
Management Trainee
Microsoft
Lucknow
Batch: 2013-15

Kalyani Kumari
Lead Business Analyst
ITC Infotech
Bangalore
Batch: 2013-15

Biswaroop Sarkar
Manager Market Risk
Standard Chartered Bank
Bangalore
Batch: 2012-14

Shivankar Seth
Supply Chain Advisory
Accenture
Hyderabad
Batch: 2013-15

Arpan Sahlot
Analyst
Deloitte
Hyderabad
Batch: 2016-18

Nitesh Mahapatra
Tax Senior
EY
Bangalore
Batch: 2012-14

Saloni Vijay
Tax Associate
PwC
Rajasthan
Batch: 2019-21

Avanish Kumar Singh
Associate Vice President
HSBC
Pune
Batch: 2014 - 16

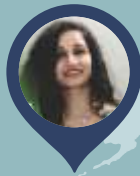
World's Top Employers for New Grads- MIBM boasts of global achiever Alumni, working with the best of companies, preferred by graduates from world's Top B-Schools

MIBM Alumni Share 85% in world's top 20 most preferred employers by world's best MBA.

MIBM Global Achievers

Career success of alumni inspires our students to set their aspirations to compete with best MBAs globally. Alumni also serve as a role model to several of our students. We encourage our students to interact with them and learn from them.

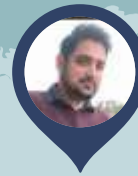
A Culture of Global Performance & Achievement



Aakanksha Singh
Batch: 2010-12
**Transfer Manager
Industry Relation & Tech**
Vietnamese German
University
Vietnam



Ayush Mohan
Batch: 2010-12
**Executive Advisor
CIO Office**
Nordea Copenhagen
Denmark



Vishal Shukla
Batch: 2012-14
Demand Manager
Hutamaki - Sydney
Australia



Pawan Kumar
Batch: 2012-14
Store Manager
Apparel Group - Doha
Qatar

MIBM Women Achievers



Akhya Singh
Batch : 2010-12
Cluster Lead
L&T
Mumbai



Aakanksha Singh
Batch : 2010-12
**Transfer Manager Industry
Relation & Tech**
Vietnamese German University
Vietnam



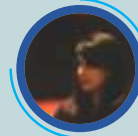
Poonam Rathore
Batch : 2011-13
HR OJT
Pepsico
Lucknow



Sneha Mor
Batch : 2011-13
**Sr Manager Investor
Alliances**
KredX India
Mumbai



Neha Katiyar
Batch : 2012-14
Sr. Executive HR
LG Electronics
Noida



Riya Ganguly
Batch : 2012-14
HR Generalist
Condé Nast India
Mumbai



Natasha Sharma
Batch : 2013-15
Area Training Manager
KredX India
Mumbai



Utkarsha Mishra
Batch : 2013-15
Management Trainee
Microsoft
Lucknow



Nayan Nagime
Batch : 2013-15
Wealth Relat. Manager
State Bank of India
Pune



Shruti Jhawar
Batch : 2014-16
**Sr. Sale Executive
Ad Sales**
Sony Pictures Networks
Mumbai



Debashree Baral
Batch : 2014-16
Senior Cluster Manager
Bajaj Finserv
Pune



B. Sunayana
Batch : 2016-18
Analyst
BNY Mellon
Pune



Shivani Sharma
Batch : 2017-19
Sr. General Manager
The Franchise India
Mumbai



Sayed Nikki
Batch : 2017-19
Transaction Processing Asso.
Accenture
Pune



Harshana Jain
Batch : 2018-20
Management Trainee
ClearTax, India
Bangalore



Divya Thakur
Batch : 2018-20
HR Executive
Aurigene Discovery
Tech. Insurance
Bangalore



Vandana Hirwani
Batch : 2019-21
Dy. Manager
YES Securitie
Ahmedabad



Saloni Vijay
Batch : 2019-21
Tax Associate
PwC
Rajasthan

MIBM Outstanding Alumni

Global and leading Indian companies hold MIBM at high esteem. As you prepare your career at MIBM, you get ready to take the challenge of turning your opportunity into a reality. International School of Business & Media creates opportunities for learning and career. You take the responsibility to use it to your advantage.

Batch : 2010-12

Ankit Srivastava
Assistant Manager - Mktg.
Escorts Ltd
Faridabad

Rahul Bose
Senior Associate
Price Water House Coopers
Gurgaon

Navneet Kumar Singh
Area Manager
Bosch
Indore

Sweta Srivastava
HR Business Partner
Sterilite Technologies Ltd
Mumbai

Jaya Ghosh
Asst. Manager Sales
Brockman Logistics
New Delhi

Neha Kumari
Brand Manager
Arcedior
Ahmedabad

Batch : 2011-13

Danish Raza
Global Marketing Head
Alhamad Leather India
Kolkata

Sahil Dhawan
Financial Analyst
British Telecom
Gurgaon

Parth Sarathi
Banca Training Manager
Tata AIG
Patna

Victor Banerjee
Managing Director
Real Estate Developer
Kolkata

Manoj Verma
Founder & CEO
Magus Management
Raipur

Chandrakant Gupta
Founder
Laxmi Group of Industries
Ambikapur

Batch : 2012-14

Neha Katiyar
Senior Executive Corp. HR
LG Electronics
Noida

Riya Ganguly
HR Generalist
Conde Nast India
Mumbai

Biswaroop Sarkar
Manager Market Risk
HSBC
Bengalore

Vishal Shukla
Demand Manager
Hutamaki
Australia

Pawan Kumar
Store Manager
Apparel Group
Quatar

Prabhakant Shukla
Relationship Manager
Kotak Mahindra Bank
Mumbai

Batch : 2013-15

Shreyansh Vaish
Procurment Manager
BT
Gurgaon

Ritesh Kumar Singh
Project Manager (SCOM)
Essel Propack Ltd
Mumbai

Shivankar Seth
Supply Chain Advisory
Accenture
Hyderabad

Devesh Sharma
Chief Manager
Kotak Mahindra Bank
Bengalore

Batch : 2014-16

Anayana Bhandari
Team Leader
Grand View Research Inc.
Pune

Sumit Joshi
Global Procurment
Perfetti Van Melle
Delhi

Batch : 2015-17

Pritam Das
Strategic Alliances Manager
EarlySalary
Pune

Amit Chawla
Sales Manager
ICICI Prudential Life Insu.
Mumbai

Batch : 2016-18

Arpan Sahlot
Transcation Risk Investigator
Amazon India
Hyderabad

B. Sunayana
Analyst
BNY Mellon
Pune

Batch : 2017-19

Abhishek Shanu
Corp. Relationship Manager
QuickRide
Pune

Himanshu Shekhar
Sr. Relationship Manager
Bajaj Allianz
Mumbai

Batch : 2018-20

Anurag Singh
Assistant Sales Manager
Homesfy
Mumbai

Deep Mehta
Senior Executive
CBRE Ltd
Nanded

Batch : 2019-21

Anurag Singh
Assistant Sales Manager
Homesfy
Mumbai

Akhil Kumar Pansari
Business Development Ex.
Acelot Innovation Pvt. Ltd
Pune

Abnish kumar
Tax Associate
PwC
Pune



Board of Governors

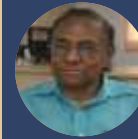
All activities of the Mulshi Institute of Business Management are overseen by the Board of Governors, comprising renowned academicians, successful entrepreneurs and corporate professionals. This gives the Institute a thorough Practical base, in addition to a strong academic position.



Dr. Pramod Kumar
Founder
ISB&M Group of Institutes
Pune



Dr. Saroja Asthana
Founder
Mulshi Group of Institutes
Pune



Prof. R.S Ganapathy
Former Professor
IIM
Ahmadabad



Mr. Shirish Kulkarni
Director - HRD
KSB Pumps Ltd
Pune



Mr. Ravendra Mishra
President - HR
Garware Technical Fibres
Pune



Mr. Suresh Amin
Head HR - India Business
J. B. Pharma & Chemicals
Mumbai



Mr. Mahendra Ramdasi
Director
Agile Cockpit
Pune



Mr. Amitesh Banarjee
Head - Corp. comm.
Della Group
Mumbai



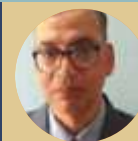
Mr. Manikrao Bamane
VP - Marketing
Reliance Industries Ltd.
Mumbai



Mr. Sunil Karandikar
Prticipal Specialist - Finance
Atos Syntel
Pune



Mr. Sanjay Patwardhan
Head- Business Int.&
Data Analytics
Cybage, Pune



Dr. Gopal Jahagirdar
Professor
MIBM
Pune



Mr. Udai Upendra
Founder CEO
The HR Company
Gurgaon

Founder's Message



Dr. SAROJA ASTHANA
Founder, Mulshi Group of Institutes and ISB&M
Ph.D. (IIT Kharagpur)

*Contributor to NOBEL PEACE PRIZE 2007 to IPCC
Fmr. Scientist NCL and NML, CSIR
Fmr. Faculty at XLRI, Jamshedpur
Consultant to IPCC, SDC, GTZ, UNFCCC,
Ministry of Environment and Forest, GOI and several industries globally Author of
several highly reputed research papers and Ph.D. Guide*

Mulshi Group of Institutes 'PGDM' has a clear strategy: Enroll the bright and creative minds, train them to be contemporary executives to build their careers by placing them in the best business houses. We have been remarkably successful given our formidable placement record, and we are on a strong upward trajectory. We strongly believe in high academic standards and have intellectually superior faculty who, along with our strong industry network design, curriculum suitable for budding global leaders of tomorrow. Research is an integral part of any reputed institute and we at MGI find it exceptionally entrepreneurial activity.

At MGI, we offer two year full time PGDM program recognized by AICTE, New Delhi. We offer specialization in Finance, Marketing, Retail, Supply Chain Management, Media and Communication and Business Analytics. It is need of the hour and we at MGI believe in contemporary areas to help our students choose and build their career. A whole lot of electives are offered in each specialized areas to give desired knowledge and exposure.

The Mulshi Campus is full of zest. As a part of campus life, several social and cultural events, sport events and guest talks are organized life frequently by students. Also, at MGI you benefit from interaction with students coming from pan India with cultural diversities.

At MGI, you will better understand the business world- and thereby, expand you world. I look forward to welcome you at Mulshi!

Co-Founder's Message

Decisive moments and actions shape your education at MIBM.

Such moments also signify that you are inclined and ready to assume business leadership role within an ever growing, ever-changing world.

We are a community defined by three core qualities.

We inspire and share success: Transformation and passionate performance are all about an inner drive to win. Success comes from creating the new direction in life and instilling values that support your aspiration to succeed. It is no wishful thinking. At MIBM, we work together to create a leadership profile and career. We shape your capabilities and transform your skills, making you the most in-demand candidate.

We think fearlessly: By blending bold creativity with rational & rigorous analytics, our students and alumni generate great career & business ideas. Our faculty and students provoke new thinking and experimentation with bold ideas. We encourage them to shed anxiety of future & paranoid thoughts.

We drive total transformation: We are impatient unless we can measure our efforts against tangible impact.

From MIBM to Everywhere

Whether seeking a summer internship or permanent employment, our students fan out across industries. From IT giants to investment banking to consumer electronics or to FMCG, our students and alumni are transforming the world around them with the values and aspiration that liberal MIBM culture inculcates. Several top rated companies look forward to recruiting MIBM students as interns and also for final recruitment. MIBM is a preferred brand also for lateral hiring at later stages of career. In career building, you find MIBM alumni all across the globe.

Campus & Culture

Our vibrant residential campus is designed to develop skills, attitude of endurance, independence, rational choice that build relationships & friendships that last a lifetime.

Look forward to a career that makes an impact & a life of your choice.



Dr. Pramod Kumar Co-Founder, Mulshi Group of Institutes

*Ph.D. (Organizational Behavior), IIT Bombay,
Formerly Associate with IIM Ahmedabad,
Former Chairperson Placement, XLRI, Jamshedpur;
Ex-Director, Symbiosis Institute of Business Management,
Pune;
Consultant to over 80 companies worldwide,
Author of over 100 research papers, cases and management
games. Research quoted internationally in textbooks and
journals. Served on Government of India Committees on
Management Education.*

A handwritten signature in blue ink, appearing to read 'Pramod'.

Our Team

Dr. S. K. DE Director (MGI)

*Vast teaching and research experience as faculty at IIM Kolkata
Fmr. Deputy Director and Joint Director in Govt. of Bengal Services
and several Government Research Institute in West Bengal*



It is my privilege to introduce the Mulshi Group of Institutes to you as a residential B-school striving to integrate basic human values with the core of management and technology in an environment having vast global opportunity and posing numerous wonderful challenges. To this we foster a process of transformation by nurturing, facilitating learning and grooming. MGI Campus is situated on a vast land in the midst of greenery and red bricks. The surroundings of MGI echoes the process of initiated changes and vision of founders. Post Graduate Program at MGI academically supported by ISB&M renounced faculty and corporate professionals.

Extensive and valuable teaching, corporate and research experience forms the academic frame of our Academic Program. Our teaching and training methodology includes non-conventional interventions such as experiential learning, simulation, case studies, management games, our bound and adventure programs. Being promoted by ISB&M, Nande, Pune, we receive extensive support from ISB&M's highly successful placement cell to place our students for summer internship and final placement. We leverage our state of the art technological infrastructure, as some of the proceedings in our classrooms are video captured and played back to facilitate multi-dimensional reinforcement of learning.



Dr. S. JAYARAMAN Director, ISB&M, Bangalore

Ph.D. AMU, PGDBM, IIM -Calcutta

MIBM is business school with a difference and has been in the forefront of management education for more than 10 years. At MIBM, We recognize that our task is to identify and build leadership talent to cater to organizational needs. Employability skills and personal values are the critical tools and traits that a student needs to successfully perform in the workplace. Being a student driven

college, the students learn to work in teams and stick to time deadlines and makes them appreciate the needs of the team members and the organization.

Over 9350 alumni who are in various parts of the globe and within the country with leading organizations are testimony to the significant achievements of MIBM over the years. MIBM is the right choice for those who want to build a career.

Dr. P. K. DE Professor Emeritus

Ph.D. (IIT Kharagpur), Post-doc scholar in Denmark and Germany,
M.E. (Gold Medalist),

*Fmr. Dean Academics, XLRI, Jamshedpur, Fmr. Prof. at S.P. Jain Institute of
Management and Research*

Awarded the "Best Teacher Award" by Association of Indian Management Schools (AIMS) in 1999. Worked with Tata Motors, Maruti Udyog, ISRO and Braithwaite & Co. Ltd.

Visiting Professor at University of Bielefeld, Germany. A corporate Consultant.



Dr. Gopal Jahagirdar Professor

M.COM., M.B.A. (IT), Ph. D.

Active PhD Guide and Supervisor for premium Education Institutes
Over Three decades of rich experience in the field of Education, Research
and Industry.

Publish over 40 International and National Research Papers
Eminent writer for Management Education books in the field of Business
Analytics and ERP.

Core Faculty

Learning programme at MIBM is supported by highly qualified & accomplished professionals from leading institutions, Universities & corporate world.

Dr. Saroja Asthana

Ph.D. (IIT Kharagpur) M.S. (USA)

Ph.D. (IIT Kharagpur) M.S. (USA).
Contributor to Nobel Peace Prize 2007 to IPCC.
Former Faculty at XLRI Jamshedpur.
Scientist at NML, Jamshedpur & NCL Pune.
Consultant to IPCC, SDC, GTZ, UNFCCC,
Ministry of Environment and Forests, GOI and several
industries globally.
Author of highly reputed research papers.

Dr. Gopal Jahagirdar

M.COM., M.B.A. (IT), Ph. D.

Active PhD Guide and Supervisor for premium Education Institutes
Over Three decades of rich experience in the field of Education, Research and Industry.
Publish over 40 International and National Research Paper
Eminent writer for Management Education books in the field of Business Analytics and ERP
Content writer Published 54 E-Books (StudentsGuilts.Com),
Edited/Writer of 5 books (Talent age Edu Ventures Pvt. Ltd)
Worked with DSRF Kharadi, VIIT (HOD) Baramati, SINHAGAD Pune, IBMR, Bharati Vidyapeeth's IMED.

Prof. Ravi Chhabra

*B.E. (Elect.),
M.B.A. (Marketing)*

Lead Assessor Course,
Insurance Life and General (Financial Advisor),
Licentiate Examination Part I (Insurance),
AMFI Certification (Mutual Fund),
Intensive Certificate Course In German, Intensive Diploma Course In German

Prof. Nitin Deshmane

*BE, M.Tech.,
M.B.A. (Marketing)*

Academic Chairperson MIBM
Pursuing Ph.D. in Management with focus area Individual Capacity Building. Blend of Academics and Industry experience working with top Management
Presented several National and International research paper
Author for Books Training and Development, Customer Relationship Management
Organizations served: Reserve Bank of India, Door Darshan, News India Express
Tire I Automobile Companies Premium Education Institute

Prof. Sonali Kadam

M. Tech (IIT, Kharagpur)

Vast teaching experience in various Institutes of repute in Pune.

Dr. Amol Chavan*Ph.D.*

Over 22 years of rich teaching experience at various Institutes of repute in Maharashtra
 Published Papers Nationally & Internationally on Teaching Learning Process
 Member of Board of Studies Dr. D.Y Patil Deemed University
 Participated in various seminars & workshops on FDP, New Trends in education

Prof. Dinkar Hajare*M.B.A. (Marketing)*

Vast teaching experience of 22 years in various Institutes of repute
 Published Papers Nationally & Internationally on Teaching Learning Process

Prof. Sanjay Meshram*B.E. M.B.A. (Marketing)*

Over 28 years of Industry experience on various positions like Project Manager at SATORP Saudi Arabia & MSEDCL etc.

Prof. Hiralal Bhandare*M.B.A. (Marketing)*

More than 12 years Industry experience on various positions like District Sales Manager at Glenmark Pharma and other companies

Prof. Sumit Chakane*M.B.A. (Finance)*

Worked with Axis & Kotak Bank at various position.

Prof. Pravin Katkar*B.C.A*

10 years teaching experience.

Prof. Navnath Lendave*M.B.A. (HR)*

10 years teaching experience.

MIBM - Visiting Faculty

MIBM is actively associated with top corporate leaders who regularly visit and Guide our students and provide practical outlook towards various disciplines. **(Illustrative List)**

Prof. Anusha Vaidya

BA (Political Science) - Fergusson College
 BA (Mass communication & Journalism) -Sikkim Manipal University Diploma (Digital Film Making) - Seamless Education Academy
 MA (International Film Business) - University of Exeter/London Film School Work Experience - 8 years working in Indian Film Industry. - Executive Producer and Costume Designer
 Founder of Masakali Productions LLP
 A practical approach to Filmmaking which includes learning all stages of filmmaking like Writing a Script, Making a budget,Scheduling, Shooting a film, Editing, etc. This course includes theory and practical aspects of filmmaking for media/web/advertisements.

Sagar Bendre

The Institute Of Company Secretaries Of India- Company Secretary, 2012,
 University Of Pune- Master of Commerce,
 Bachelor of laws (LL.B), Bachelor of Commerce,
 National Institute Of Securities Market- Merchant Banking Certification Examination, Founder of Inc. Law Practice, India, 2019,
 More than 12 years Teaching experience, More than 12 years of industry experience,

MIBM - Visiting Faculty

Rati Shukla

Pursuing Ph. D from Banasthali Vidyapeeth, Rajasthan, Master's in Business Law from National Law School of India University, Bangalore (2017), Certificate in Teaching in Higher Education from Oxford Brookes University in collaboration with UKEIRI, UK.(2011), Master's in Business Administration from Nagpur University (2003), Bachelors in Commerce from Allahabad University (2000), Indian School Certificate (ISC) from St. Mary's Convent, Allahabad (1997)

Amit Chakraborty

B. E. Mech. (NIT)
PGDM XLRI, Jamshedpur
Professional with 12 Years of experience in Sourcing, Supply Chain, Cost Reduction, Program Management, Vendor Development and Quality Assurance in Manufacturing Domain, seeking challenging roles in Purchasing, Supply Chain, Project Management.
Three Year Evening, Business Management Program (900+ Class Hours),
Four Year Full Time Programme, DAV JVM, Shyamali, Ranchi-
AISSCE CBSE Curriculum in Science,
Product Costing Manager, Schindler India Pvt. Limited, Pune, Maharashtra India

Manisha J. Sanghvi

MBA- Finance, Ph.D. scholar at Symbiosis International University
More than 10 years of experience (3 years Industry & 7.5 years in teaching)
Rich exposure to Derivatives & Financial Risk Management, Financial Management, Financial Markets & Institution, International Finance and Treasury Management.

Anirban Das

MBA IIM Ahmedabad
Over 19+ years of leadership positions experience in both established and startup ecosystems with experience in Business Process Transformation, P&L management, Strategy, Analytics, Sales, Channel Management, International Business, Operations, Marketing, Quality & Manufacturing

Naresh Kodavoor

PGDM, MBA TAPMI Manipal,
20 years of work experience both in Domestic and International markets across industry sectors like FMCG, Consumer Durables, Beverage and Industrial Products.
Also Includes 4+ years of teaching experience as a Visiting & Regular faculty

Girish Pathak

Director - Infostar Business Solutions
B.E. VJTI Mumbai
MMS SP Pune University,
Qualified Lead Assessor (ISO 9000) - BSI UK, Master Black Belt (Six Sigma) - SAC USA,
Work Experience 33 Years Total industry experience of 33 years worked in various blue-chip companies and in Training and Consulting and simultaneously done teaching as a visiting faculty for 21 years.
Worked as a panelist for last 6 years for All india Six Sigma competition held by Sakal-SCMHRD.

Kapil Dhatingan

B Tech Chemical Engineering from IIT Mumbai
XLRI Jamshedpur.
Business Head Gujarat, Maharashtra & Goa, Bharti Airtel Ltd.
Head Global Account Management & Reciprocal Business Bharti Airtel Ltd.

Dr. Ruma Banerjee

Ph.D Sociology Calcutta University,
Provided the day to day leadership to BrandzMap to build up a boutique digital research company to reckon with. Spearheaded the development and implementation of effective business growth strategies and processes and responsible for driving the organization to achieve profitability.
Worked in Business Organization Future Ideas, the Innovation Lab of Future Group, and Raymond Ltd.
Was a member of the Ideating team at Future Group, worked towards building values and scenarios and Ideas that can impact Businesses and Society
As Head- Research, in Raymond Ltd worked in partnership with key stakeholders across all business and brand groups (Textile, Apparel, Retail, Real Estate, Personal care & Fragrance and Engineering division) and working towards brand revitalizing programs to drive profitable growth.

Sameer Jain

B.E. Information Technology, Post Graduate Diploma: Information Technology Management M-Tech (Gold Medalist) Ph.D. - Computer Science and Engineering (Pursuing), Microelectronics Systems & Embedded Technology- Institute: Jaypee Institute of Information Technology University (JIITU), Noida.
- Institute: All India Management Association (AIMA), New Delhi,
Post Graduate: Diploma in Intellectual Property Rights Management (PDIPRM)- Institute: Narsee Monjee Institute of Management Studies University (NMIMS), Mumbai,
Institute: Rashtrasant Tukadoji Maharaj Nagpur University, Nagpur, National Institute of Construction Management and Research (NICMAR), PUNE

Distinguished Guests

Our reputation and location bring some of the most inspirational and thought provoking leaders to the institute. Students are challenged by speaker from Industry, Marketing, Finance and Media.



V. K. Bansal
Chairman - India
Investment Banking
Morgan Stanley



Manoj Kohli
Country Head
Softbank Group
International



Madhavi Lall
MD, Head - HR
India Deutsche
Bank



Sanjay Mathew
Senior Director -
Head
Oracle



Megha Tata
Managing Director
Discovery
Communications



Rohin Nadir
Director; HR,
National Head
KPMG



Ashish Chandra
Chief Executive
Officer
Bharti Airtel



Divya Pathak
Director of Publicity
Netflix



Anil Bhasin
President
Havells



Sandhya Sharma
CFO,
India & South Asia
Schindler



Eric Tinch
Sr. Vice President,
HR and GDT
Sutherland



Lokesh Sikka
Director, CHRO,
Vice President
Onida

Learning From Leaders

At MIBM, we invite several highly accomplished executives for Guest Lectures. We focus primarily on MNCs and top Indian companies. This helps students learn about executive talent, career planning and several of them could serve a role model to our students. Career building is a systematic and planned approach that must be learned.



Samir Kukade
President -
Human Capital
Praj Industries



Amit Garg
Vice President
Morgan Stanley



Sahil Nayar
Sr. Associate
Director
KPMG



Manish Prabhu
Director
Microsoft



Sailesh Menezes
Sr. Director &
Head-HR
Hewlett Packard



Sanjeev Parkar
Sr. Director -
Human Capital
PwC



Sandeep Jain
Vice President
Bank of America
Merrill Lynch



Rajeev Bhadauria
Director - HR
Jindal Steel



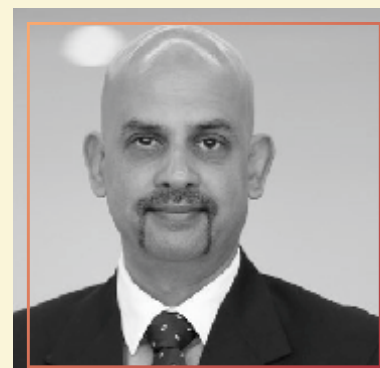
Maharana Ray
Vice President
Bajaj Auto Ltd



Dhananjay Gadgil
Director of
Mfg. Operations
Rockwell Automation



Pavitra Singh
Director - Head of
Talent Acquisition
PepsiCo



Dinesh Mishra
Regional Director-
Talent Acquisition
Abbott

VIDYAS
TY, UNIVERSIT
ON 21 & 22 NOVEM

Life @ MIBM

MIBM

MAKE THE
DIFFERENCE



MIBM

**MAKE THE
DIFFERENCE**



Student Buzz

"Break free culture and life style at MIBM promotes an environment of openness. Learning to explore own approach to life and professional fulfillment and to overcome self-limiting attitude. It is learning all the way".

ORIENTATION PROGRAMME FOR FRESHERS

The OP is designed to welcome the new batch of student at MIBM & Seek to enrich perspective towards education & life at a high profile Business School. Spread over a week with an outbound programme. A carefully crafted Programme which blend demanding professional commitment, information. Aims to build your perspective towards industry & a professional career in business & to provide opportunity to interact with accomplished leaders from high profile industry.

HR SHARE

In today's corporate scenario, HR plays an integral role in the successful working of an organization. Keeping the same in mind, every academic year is marked by the organization of the annual HR Meet known as "HR SHARE". This conference is a premier event designed for high-potential HR professionals who are into leadership roles. This event provides practical, best-in-class approaches and perspectives from senior HR leaders and executive from eminent industries. The event has been graced by the presence of many eminent speakers from diverse fields in the past. The audience is mostly composed of HR executives working at different levels from different organizations. It is the 20th national level HR conference and the core topic for the discussion was "**Data Driven HR Organization**" It has several sub-themes too. The conference is designed around themes and topics which are aligned to the various complexities that surround business.

CONVOCATION

The annual convocation ceremony was held on March 09, 2019. The chief guests Mr. Kishore Jayaraman, President in Rolls Royce India & South Asia. Guest of Honor Ms. Richa Dubey, Director HR in Schneider India, Keynote Speaker Mr. Pankaj Suri Director HR in Edelman India awarded the students for their performance. The placements of the students showed the rapid growth of the institute over the last few years which now have a strong alumni base.

CHAIN ACT

MIBM hosted the highly popular annual supply chain conference. The theme for the year was "Adapting to digital Disruption in Supply Chain Management: Today's great challenge. The main focus of the conference was to reason with the constraints and the measures.

FINANCIAL ROULETTE

The game of uncertainty Financial Roulette is a platform where we connect the three powerful concepts of Revelation, Enlightenment & Embrace of predictive/ risk management within economic and financial cosmos. The conference welcomes all relevant theoretical, methodological and empirical contributions. The Theme for this year was Financial Analytics: the real opportunity in the North.

CHAKRAVIEW

Sporting events in Pune - A series of 8 games Cricket, Football, Basketball, Volleyball, Badminton, Table tennis, Chess & Carom are played by the students of different colleges. Colleges from all over the city come here every year to battle it out for the top honors. For a few days, the lush green sprawling campus of MIBM witnesses a lot of on-the-ground actions and intense competition as the city's best battle it out for supremacy. With temperature literally running high, it is one of those must-see displays of grit and sportsmanship where sportsmanship of the highest order is witnessed !!

Beyond Classroom

Students council plays a key role in process management. Highly active in development activities & energetic life @ MIBM.

CAMPUS RECRUITMENT :

This cell is the conciliator between the recruiters and the students. The paramount objective is to deliver well positioned campus recruitment program and a remarkable value to the recruiters. This division is responsible for handling complete placement procedure and work as an interface between the institute and the corporate world.

ALUMNI CELL :

Alumni Cell creates and maintains a life-long connection between the institute and its alumni. There are over 9350 alumni of MIBM around the globe. In collaboration with an extremely dedicated volunteer board of director, The Alumni cell works to connect alumni support students and build an unforgettable institute experience through a diversity of events, programming and services.

DIGITAL MOMENTS CELL :

DIGI-Eye- The Digital Moments cell , also Known as the " third Eye" of MIBM is a team of visual minds who are passionate about seizing moments with a click and filling them up with memories that last forever. The team captures every moment and renders technical minds as true lenses of the shutter and reveals how rich reality truly is! "The Team is like a SAVE button for the mind's eye and we call it –DIGI-Eye.

MEDIOS :

MIBM Media and Movie Club is the hub that transforms Imagination to Reality. We also arrange Media Workshops, with highly reputed Media Corporates to give the Students an opportunity to directly communicate with them, so that they can get an Insight on the recent happenings of the corporate world.

I-TALK :

The platform of the Intellectual Development Cell works with a motto of fulfilling the intellectual needs of the students. It aims to introduce the students to a number of motivational and influential speakers, which will help them gain insight into a number of issues and changes in the world. Its aim is to ensure that MIBM is a place where wisdom meets excellence and to build up the interaction between finest industry experts and the students.

SPORTS ACADEMY :

The Sports Academy offer facilities for several out-door and indoor games like Basketball, Volley ball, Cricket, Table Tennis etc. Its main aim is to inculcate values of team spirit, hard work, enthusiasm and passion.

MARKETING CLUB :

The idea of this council is to look beyond the books and plan to extend this by organizing field trips and workshops on untouched areas by top industry professionals to get insights into the exciting and dynamic world of marketing. It is a platform where students get an opportunity to blend marketing theories with real time application. Marketing Club, keeps on organizing Quizzes, Guest Lectures, Seminar, inter and intra-college competitions.

CORPORATE RELATION CELL :

The Corporate Relation Cell works towards professional engagement and enhancement of public relations for the institution. The cell is entrusted with the task to liaison with the top companies of various industries and to identify itself with the responsibility of building new relations and working on inconsistent ones. Conceptualization and Implementation of guest lecture is one of the key responsibilities of the cell.

HR CLUB :

The HR Club of MIBM has been established with a vision to enhance knowledge skills and capabilities of HR students. It is ignited with a mission to accelerate and stay ahead in the dynamic universe of HR Professionals. The range of activities conducted by The HR club of MIBM always reflects a constant goal of delivering learning outcomes to the budding management professionals of our institution.

DEBATE CELL :

"The Debating Society" organizes discussions, public speaking events, and board room conferences. This helps in providing a platform for the students to express their views, understand different viewpoints and to structure their thought process in a meaningful way.

DIGITAL MARKETING CELL :

The Digital Marketing Cell works on increasing the reach and visibility of MIBM. The mission and vision of this cell is to promote ISB&M globally. We are responsible to bring in engagement on part of the aspirants, thus promoting cultural diversity along with individual enlightenment. It works on social media marketing, blogging, display advertising, remarketing.

CSR CELL :

CSR at MIBM is a student driven initiative that works towards making the world a better place to live in. We leverage our talent, geographical reach and resources to make a positive and long lasting impact on the upliftment and empowerment of the society at large. The aim is to share what we have, to bring some light and happiness into the lives of the less privileged. This includes activities like road safety campaigns, skill development programs, advocacy practices, cleanliness drives, women empowerment campaigns and many more.

LIFESTYLE DEVELOPMENT CELL :

The lifestyle Development cell of MIBM is meant to make the life more fun filled, artistic and interesting. It provides a platform for the students to participate and manage cultural and social events successfully.

FITNESS CLUB :

Fitness club of MIBM is the club that focused on the physical and mental aspect of the students. This club houses exercise, personality development program, yoga, Zumba, Self-Defense and all other activities that makes students ready for corporate challenging schedules and working hours. The fitness club helps students feel good about themselves which boosts their confidence and gives the motivational to lead a healthy life.

Pune - Mulshi Campus

The Mulshi Group is Promoted & Managed by ISB&M Nande, Pune. Mulshi is a 30 minutes' drive from Nande. The Institute is spread over a vast campus. The serene ambience of Mulshi provides inspiration to students to achieve excellence both in academics and in overall personality development. MGI was founded in the year 2009 with MIBM & MIRM.

The institute encompasses a wide span of specialist areas, including Marketing, Finance, Media Communication, Supply Chain & Operations, Human Resource, Industrial Relations and Business Analytics. Highly accomplished professors & corporate professionals support each of these specialist areas.

Research expertise forms the foundation for teaching in the institute and is a source of innovation & dynamism that informs the teaching process. Faculty who are hard core professionals draw upon relevant well researched business examples & cases. Distinguished visiting professors & corporate professional leaders enrich the teaching learning process. The post graduate programmes are highly vocationally relevant & based on rigorous analytical approach. Student learning driven methodologies provide a sound basis & career development in business & various professions.

We are a dynamic and diverse institution. With an impressive infrastructure, a library with almost 10,000 e-journals and hard copies, optional residential hostels for men and women, the institute provides quality education and a degree that will find recognition even at the international level.



Start your path



Admission Process

MIBM Post –Graduate Programme is ideally suited to graduates who are aiming to develop high profile corporate careers on long term, and wish to seek promising break.

We are looking for talented achievers seeking for a rigorous and challenging programme. We expect our applicants to demonstrate intellectual capacity, a track record of success, leadership potential, energy, integrity and a global outlook.

Eligibility:

Bachelor degree in any discipline, Candidates appearing for final year bachelor degree examinations can also apply provided they complete all degree requirements by September 30, 2022, all AICTE programme require a test score and 50% in graduation.

Selection @ MIBM

“A *Decision* that changes your *life*,

MIBM selection process is linked with careers & demands of recruiters. To meet the demands of our high profile recruiters, who offers you compensation in the range of Rs. 7 lacs to Rs. 14 Lacs CTC, we set up the standards of intake.

A candidate should **fulfil at least any one of the conditions below :**

- A.** CAT 70 or XAT 50 Percentile & above with minimum 50% marks or equivalent CGPA in graduation from any recognized university
- B.** With academic background of 10th standard – 75%, 12th standard – 75% & graduation – 60% marks or equivalent CGPA in graduation from any recognized University – with a valid score card in CAT/XAT
- C.** Need to qualify MIBM written competency test

Note:

- Candidates in Category – A & B, automatically qualify for the GD&PI- provided applied within the time limit.
- Candidates in category C- will undergo MIBM written competency test with GD&PI Process. Check website for the date.

While MIBM, admissions are competitive, our selection criteria revolves around the candidate's ability to:

1. Cope with demanding environment in MIBM
2. Candidate's ability to build career with MNCs and high profile Indian companies.
3. Candidate's openness and ability to learn new social and cultural habits & values, those professional MNCs, especially seek.

In order to succeed in MIBM, a candidate must develop learning attitude for a career and imbibe an open minded attitude towards exploring newer experiences & make serious efforts at self-development.

A. Weightage in selection process :

1. Written Test: 25%
2. Academics: 25%
3. GD&PI: 40%
4. Work Exp: 10%

For an outstanding candidate, only written test score is not a barrier.

Scholarship and Rewards*

The institute has the provision for awarding the following scholarship and rewards to the deserving performers.

Merit scholarship :

MIBM awards Rs.1,50,000 to the TOP 20 students who obtain all of the following :

- 80 Percentile & above in CAT or XAT
- 70% & above or equivalent CGPA in Graduation
- 85% & above in 10th Standard
- CGPA of 5 & above in 1st Trimester of PGDM program
- 85% & above in 12th Standard

How to Apply

- Application form is available at www.mgi.ac.in and must be submitted online with the application fee, which is non - refundable.
- Candidates can obtain application form from the campus or from the marketing offices of MIBM by paying the application fee.
- The application fee can be paid through credit card / Debit card / Bank Transfer through the designated payment gateway or demand draft (Mulshi Institute of business Management).

→ Group Discussion and Personal Interviews ●

The short-listed candidates for Group Discussion and Personal Interviews (GD & PI) will be posted on the website and also be intimated to the candidate by SMS, email, courier /speed-post.

Cities where GD & PI will be conducted : ←

North: Allahabad, Chandigarh, Delhi, Dehradun, Jaipur, Varanasi, Lucknow

East: Bhubaneswar, Guwahati, Jamshedpur, Kolkata, Patna, Ranchi

West: Ahmedabad, Bhopal, Indore, Mumbai, Nagpur, Pune, Raipur

South: Bangalore, Chennai, Hyderabad, Vijayawada

Important Dates for Application

- | | |
|--|---|
| 1. Application Forms Open | 4 th October, 2021 |
| 2. Application Forms Close | 27 th January, 2022 |
| 3. Early Bird (Application Fee: Rs. 400/-) | 4 th October to 4 th Nov, 2021 |
| 4. Application Fee : Rs. 700/- | 5 th Nov to 31 st Dec, 2021 |
| 5. Application Fee : Rs. 1200/- | 1 st January to 27 th January, 2022 |
| 6. Group Discussion & Personal Interviews | February, 2022 onwards |
| 7. Admission Process Close Batch: 2022-24 | 30 th March, 2022 |
| 8. PGDM Programme Commencement Date | June, 2022 onwards |

Fee structure and other details

The fee is only the course fee and does not include hostel fees and expenses for living. The schedule of payment of fees is as given below

| MIBM Campus | I Installment at time of Admission | II Installment June, 1 2022 | III Installment Nov, 30 2022 | IV Installment 1 st Week, July 2023 | V Installment Nov, 30 2023 |
|-------------|------------------------------------|-----------------------------|------------------------------|--|----------------------------|
| Fees | 1,10,000 | 1,85,000 | 1,85,000 | 1,85,000 | 1,85,000 |

B. Other Expenses: (To be paid with 2nd Installment)

- Admission Processing Fee Rs. 10,000.
- Caution Money Deposit of Rs.10, 000 (Refundable).
- Placement fee as specified by the Placement Assistance Cell is Rs. 20,000 per year.
- Alumni Life Membership of Rs. 10,000.

***Note:** Currently 18% GST is applicable on Alumni fee & Placement Fee only, however GST will be charged at actual, if applicable on other fees.

C. Separate hostel facility :

Hostel facility for girls and boys are available inside and outside the campus. The selected students need to apply separately to avail the hostel facility.

D. Rules for Cancellation of Admission :

Cancellation of admission by last day of Orientation Program, Rs. 1000 will be deducted and the balance will be refunded. No refund of fees against cancellation of admission after Orientation Program.

Note: Currently 18% GST is applicable on cancellation Fee only, however GST will be charged at actual, if applicable on other fees.

E. No. of seats available :

| Post Graduate Diploma In management (PGDM) Programme | Mulshi |
|--|--------|
| Marketing | 60 |
| Finance | 30 |
| Human Resource | 30 |
| Supply Chain Operations Management | ✓ |
| Media and Communication | ✓ |
| Business Analytics | ✓ |

Session Begins On

Pune – Mulshi : June, 2022

Notes

- ⊕ Any complaints or grievances should be brought to the notice of Secretary or Director
- ⊕ MIBM Management reserves the right to make appropriate changes
- ⊕ All legal disputes are subject to Pune jurisdiction only
- ⊕ Post graduate Diploma in Management (PGDM) programme are recognized by AICTE

Reservation of Rights

The management of MIBM reserves the right to change policies, systems and procedures, faculty mix, regulations affecting students or any other suitable modifications, should these be deemed necessary in the interest of the programme and the institute

Anti - Ragging

Ragging in any form is prohibited in college. Ragging is illegal and a criminal offence under law. For a reported case of ragging, it is mandatory to initiate disciplinary process and also report the same to police



Where can
my degree take me?



Students Batch : 2020-22

Siddhant Awale -

Deloitte

Piryanshi Awasthi -

Deloitte

Divyanshi Rajwani -

Deloitte

Stakirat Singh Patti -

PwC

Aakash Sharma -

ICICI Home Finance

MIBM

Unique Bold & Ahead of Time



Students Batch : 2020-22

Sonika Kumari -

Deloitte

Deependra Pratap -

ICICI Bank

Aditi Sachdev -

ICICI Bank

Shubham Bhatt -

Wipro

Final Placement

Batch: 2020-22



Anushka Mishra

Hewlett Packard Enterprise

CTC 13 Lacs

Inside Sales Account Manager

Ignited Minds Society's

MIBM

AICTE Approved PGDM

Promoted and Managed by **ISB&M**, Nande, Pune

"Education is the most powerful weapon which can use to change the world"- Nelson Mandela



www.mgi.ac.in



City Office:
B-104, Pinnac Gangotri,
Nagras Road, Aundh,
Pune - 411 007

Campus::
Gat No. 237-243,
Sambhave
Tal- Mulshi,
Pune - 412 108

Email: admission@mgi.ac.in, Website: www.mgi.ac.in, Mobile: 9923810437